

SPRAYCOLD

(COLD SPRAY SYSTEM)

Introducing a metal deposition process that requires no blast cleaning and no oxy-fuel gases. It works solely with air, providing a coating with high bond strength and density. You can apply almost any metal powder, including brass, copper, nickel, aluminum, zinc, tin, bronze, lead, stainless steel, aluminum - silicon carbide, aluminum-copper- zinc, nickel-zinc, copper-tin-lead and many more.

MSC - 500
MCS - 23



MCS - 23

Cold spray gun with heater installed.

MSC - 500

(MEC cold spray system with trolley, massflow controlled powder feeder and PLC controlled panel.)

Special Features:

- ▲ The detachable type control screen can be removed and positioned on another stand or exterior wall of the spray chamber if user wants to spray using robot/manipulator.
- ▲ Working Gas: Air or Nitrogen
- ▲ Single Phase Electrical Supply Requirement.

Application of Cold Spray

- ▲ Repair bearing seats.
- ▲ Repair forms & patterns for casting.
- ▲ Hermetically seal radiators and air conditioner.
- ▲ Add electrical conductive layers to materials.
- ▲ Additive manufacturing and many more.

Maximum power consumption:- 3.3kW

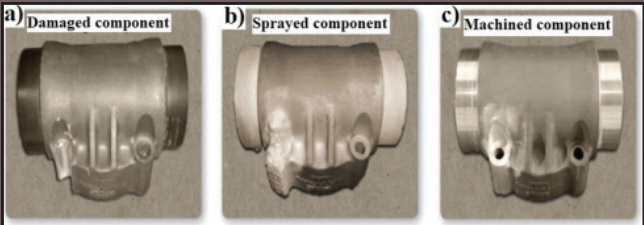
Power supply:- Single Phase 220v, 50/60Hz

Powder consumption:- 10-60 gm/min
(compatible powder will be supplied by MEC)

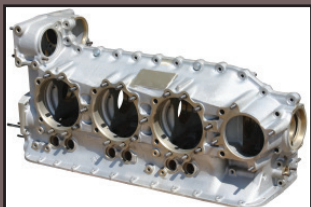
Capacity of Powder Feeder:- 3350 CC (3.3 Liter)

Dimensions and Weight of the System:-
Approx. 600(W) x 500(L) x 1400(H)
Approx. 110 kg

Prevent & Repair Damage.



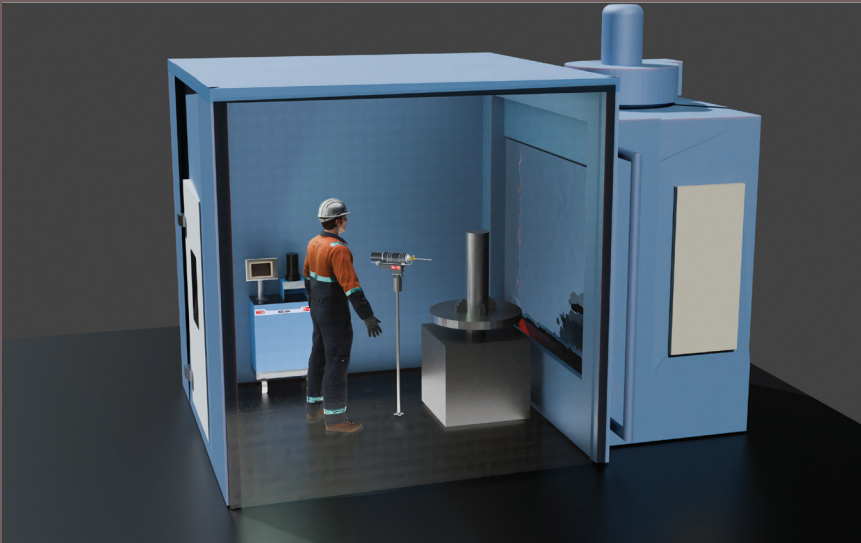
Engine Crank Case



Scan QR for Video



Spraycold working in Acoustic Room to reduce noise level and collect over-sprayed dust



Metallizing Equipment Co. Pvt. Ltd.

E-101, M. I. A., Phase- II, Basni, Jodhpur 342 005 INDIA

www.mecpl.com

Ph. : +91-291-2747601 Fax : 2746359 Email : marketing@mecpl.com / sales@mecpl.com / biz@mecpl.com